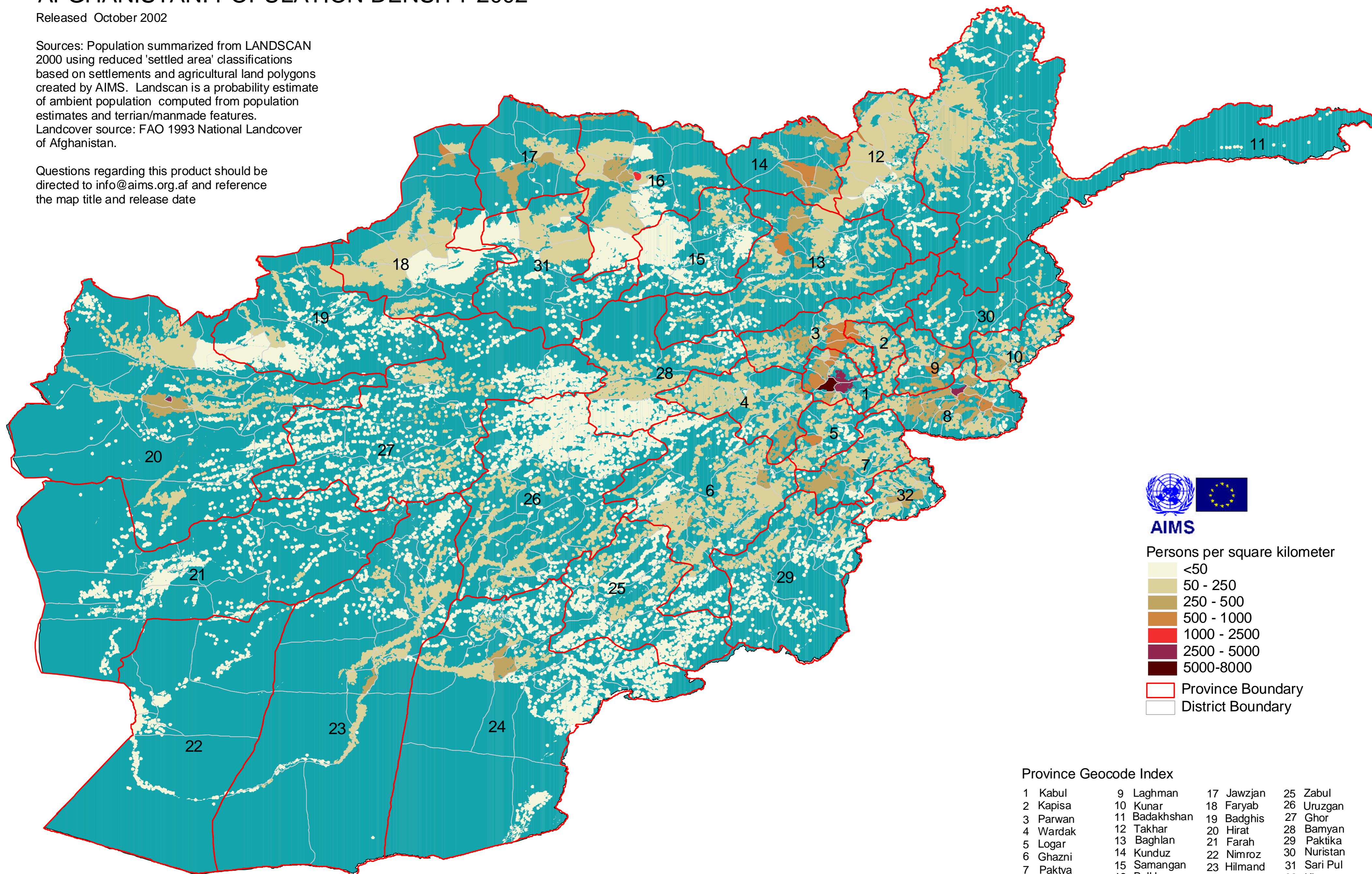


AFGHANISTAN: POPULATION DENSITY 2002

Released October 2002

Sources: Population summarized from LANDSCAN 2000 using reduced 'settled area' classifications based on settlements and agricultural land polygons created by AIMS. Landscan is a probability estimate of ambient population computed from population estimates and terrain/manmade features. Landcover source: FAO 1993 National Landcover of Afghanistan.

Questions regarding this product should be directed to info@aims.org.af and reference the map title and release date



AIMS

Persons per square kilometer

- <50
- 50 - 250
- 250 - 500
- 500 - 1000
- 1000 - 2500
- 2500 - 5000
- 5000-8000

- Province Boundary
- District Boundary

Province Geocode Index

1 Kabul	9 Laghman	17 Jawzjan	25 Zabul
2 Kapisa	10 Kunar	18 Faryab	26 Uruzgan
3 Parwan	11 Badakhshan	19 Badghis	27 Ghor
4 Wardak	12 Takhar	20 Hirat	28 Bamyan
5 Logar	13 Baghlan	21 Farah	29 Paktika
6 Ghazni	14 Kunduz	22 Nimroz	30 Nuristan
7 Paktya	15 Samangan	23 Hilmand	31 Sari Pul
8 Nangarhar	16 Balkh	24 Kandahar	32 Khost

The boundaries shown do not imply official endorsement by the United Nations. For standardization purposes AIMS uses the 32 province/329 district boundary model.